

**Sky Robotics EAGLE 1  
Fixed-Wing-VTOL UAV  
Survey-Mapping System**



## Description

**EAGLE 1 is a 7 Kg VTOL fixed-wing platform designed to performed survey-mapping missions**

## Technical Data

**Length: 1200mm**

**Wingspan: 2100mm**

**Wing area: 59dm<sup>2</sup>**

**Max take off weight: 7 Kg**

**Maximum Payload: 1 Kg**

**Take-off and Landing approach: VTOL**

**Endurance: 82 min (1.37hr) (lipo 6S@16000mAh)  
112 min (1.87hr) (lipo 6S@22000mAh)**

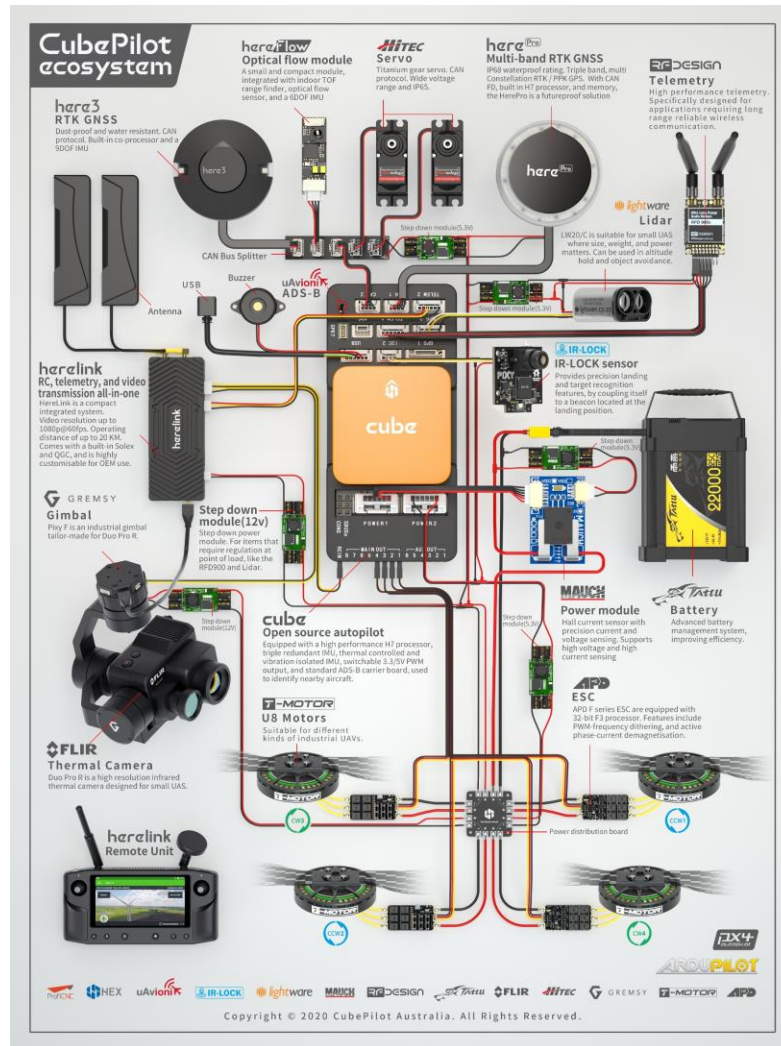
**Speed: 19m/s (68.4 Km/h)**

**Maximum Range < 40 Km**

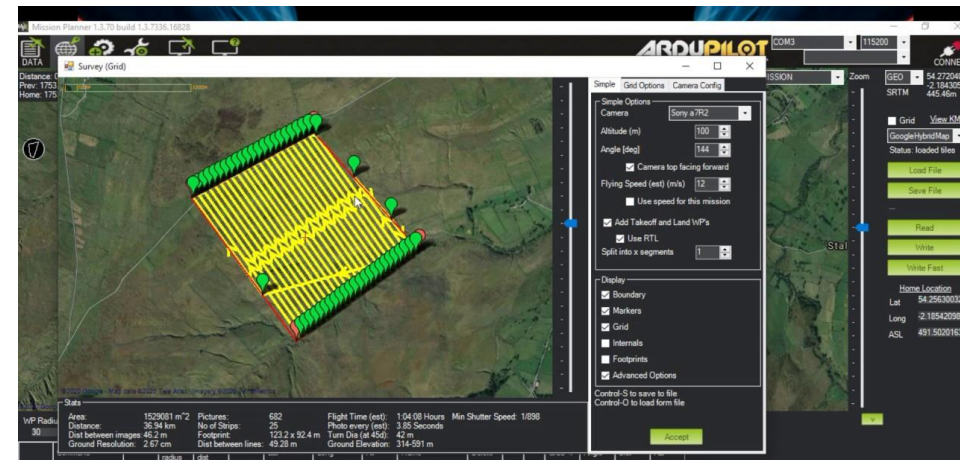
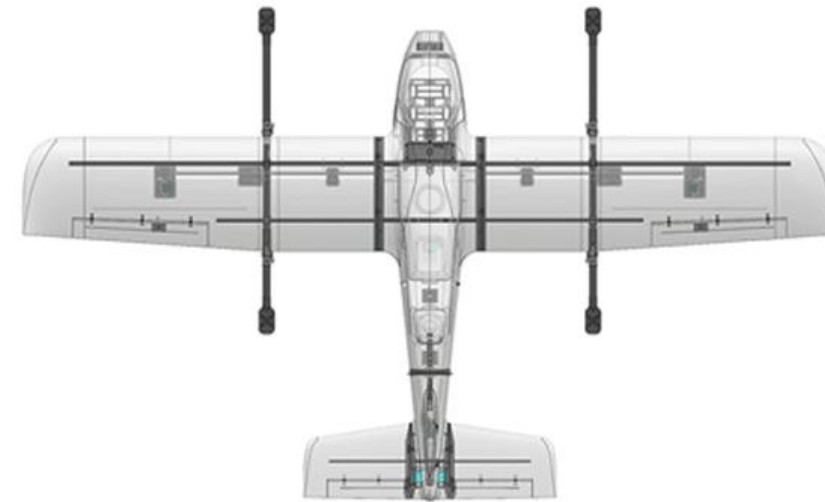
**Material: EPO, carbon fiber, plastics.**



# Control System



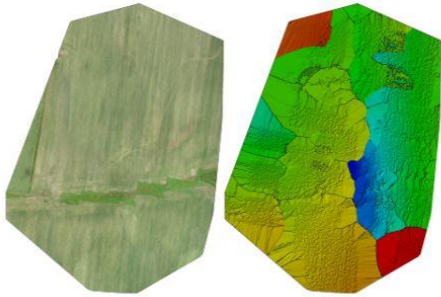
Hardware: (Cube Orange)



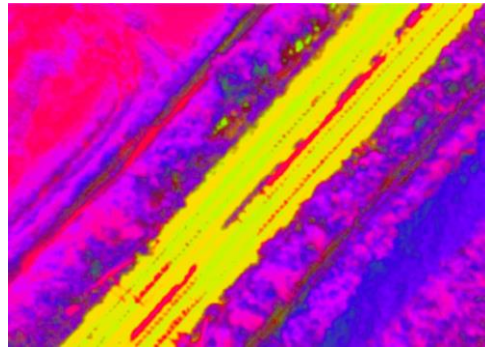
Software: Mission Planner

# Applications

- Orthomosaic and Digital surface model run on Pix4D Mapper

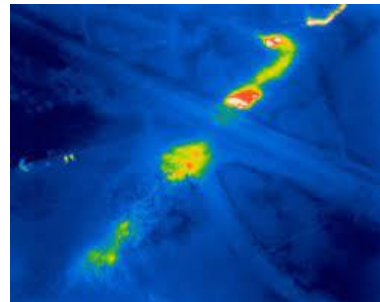


- Railroad inspection using daylight and thermal sensor



Thermal sensor

- Oil pipeline line inspection using daylight and thermal sensor



RGB sensor

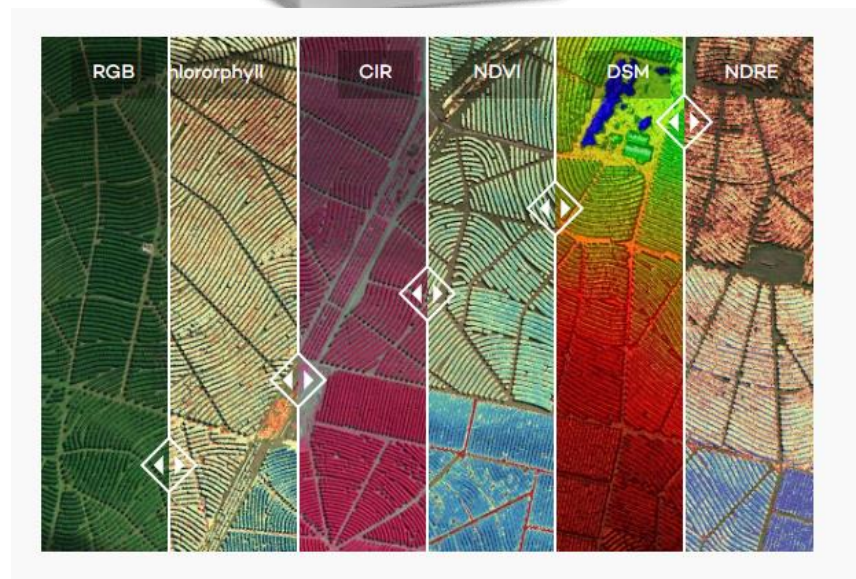
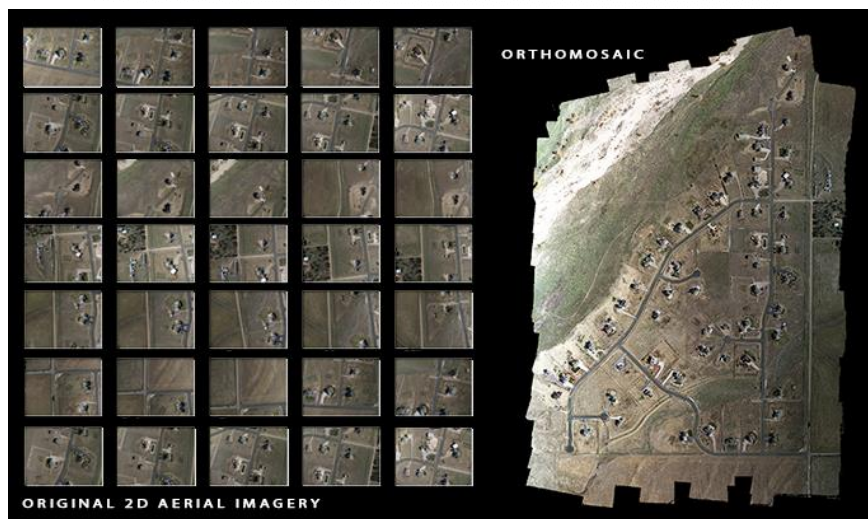
# Applications



RGB sensor



Multispectral sensor



Multispectral imagery

# Sky Robotics, LLC

---

